

# 2015 Q4 Healthy Environment Dashboard



## 2015 Healthy Environment Index - Q4

2020 Strategy	Key Result Area	Measure	Target	Actual	Achieved	Rating
Access and Affordability	Funding our Future	Energy Utilization	-2%	-3.4%	★	4.4
		Solid + Medical Waste (lbs/APD)	16.70	16.35	★	5
		C & D Recycling	80%	88%	★	4.6
		Reprocessing Savings	90%	96%	★	4.2
		Paper Reduction	-4%	-1%		1
Advocate Experience	Quality	Green Cleansers	90%	91%	★	3.2
		Healthy Beverages	55%	47%		1
	Service	Health Environment Events	20	39	★	5
		Screenings	70%	42%		1
		Earned incentives	45%	59%	★	5

\*Based on highest cost medical plan

## Healthy Environment Index YTD

**3.64**

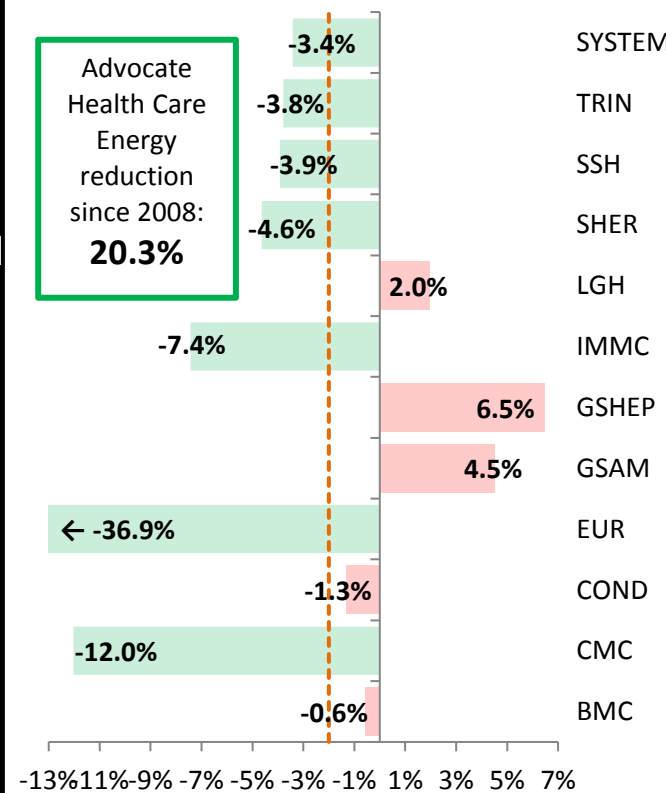
### Healthy Beverages

Site	Target	Actual	Achieved
AMG	55%	65%	★
BMC	55%	39%	★
CMC	55%	44%	★
COND	55%	52%	★
DREY	55%	43%	★
EUR	55%	37%	★
GSAM	55%	51%	★
GSHP	55%	49%	★
IMMC	55%	53%	★
LGH	55%	45%	★
OTHER	55%	49%	★
SHER	55%	53%	★
SSH	55%	50%	★
TRIN	55%	40%	★
<b>SYSTEM</b>	<b>55%</b>	<b>47%</b>	<b>★</b>

### Energy Utilization (weather adjusted)

Adjusting for square footage added, Advocate's energy reduction efforts since 2008 have avoided the release of 203,007 metric tons of Carbon Dioxide (CO<sub>2</sub>) into the atmosphere. That is equivalent to:  
 - Carbon emissions by over 42,738 passenger vehicles (1yr)  
 - or, energy to power 18,523 homes (1 yr)  
 \*EPA WARM Calculator used to estimate the environmental benefit savings.

2015 Goal = 2% reduction (or -2%)



### Green Cleansers

Site	Target	Actual	Achieved
BMC	90%	100%	★
CMC	90%	89%	★
COND	90%	96%	★
EUR	90%	50%	★
GSAM	90%	91%	★
GSH	90%	100%	★
IMMC	90%	94%	★
LGH	90%	96%	★
SHER	90%	98%	★
SSH	90%	78%	★
TRIN	90%	86%	★
<b>SYSTEM</b>	<b>90%</b>	<b>91%</b>	<b>★</b>

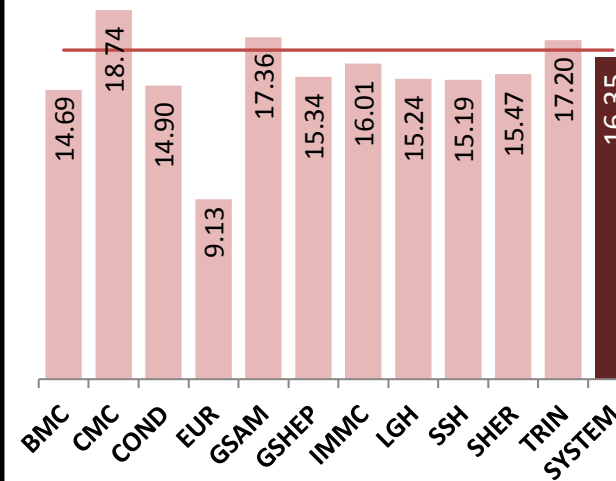
## Waste

Advocate's recycling efforts in 2015 saved over 3525 tons of waste from landfill OR 11,107 metric tons of CO<sub>2</sub> emissions which equates to:  
 - Removing 2,338 automobiles from the road for one year or  
 - Electricity used by 1,013 homes for one year

\*EPA WARM Calculator used to estimate the environmental benefit savings.

### Solid and Medical Waste

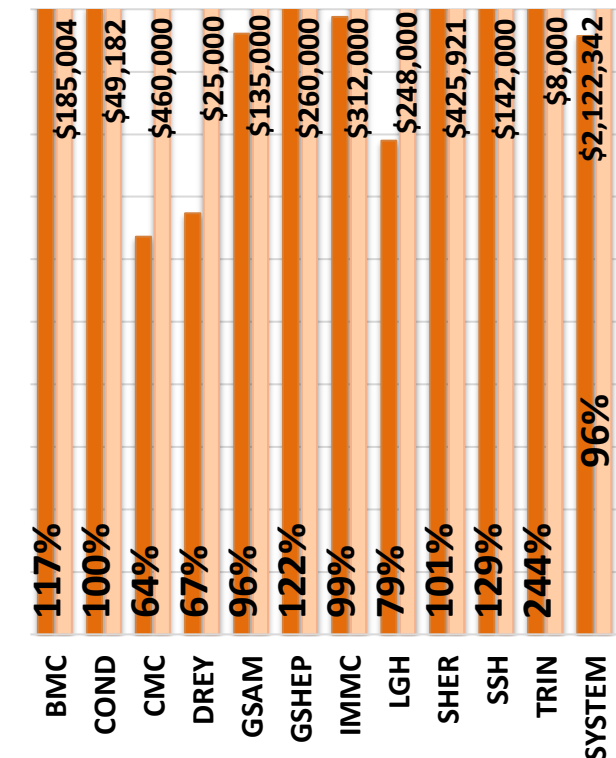
Combined Goal: 16.70 lbs/APD



### Medical Device Reprocessing Savings

Waste savings: 59,111 lbs avoided landfill

### % to 2015 Annual Savings Target

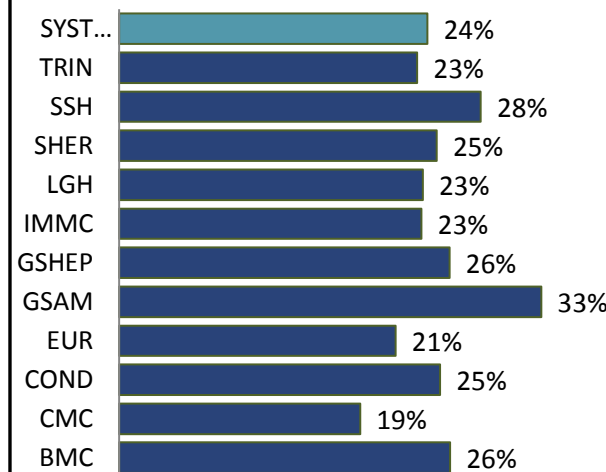


### Construction & Demolition Debris Recycling

GOAL	YTD ACTUAL
80%	88%

### Key Waste Indicator

### Recycling as % of total waste



### Paper Reduction

Site	Target	Actual	Achieved
BMC	-4%	-2%	★
CMC	-4%	-2%	★
COND	-4%	-5%	★
EUR	-4%	9%	★
GSAM	-4%	-2%	★
GSHEP	-4%	-8%	★
IMMC	-4%	2%	★
LGH	-4%	7%	★
SHER	-4%	0%	★
SSH	-4%	-5%	★
TRIN	-4%	-3%	★
Hospitals Total	-4%	-1%	★
DREY	-4%	-3%	★
AMG	-4%	1%	★
ACL	-4%	-19%	★
SUPPORT	-4%	11%	★
<b>Blended Total</b>	<b>-4%</b>	<b>-1%</b>	<b>★</b>